

## Logos Imaging Application Software Installation Steps

**IMPORTANT:** Prior to installing the Logos Imaging Application Version 6.0, please connect to Windows Update and install all priority updates for your computer.

**Note:** If you are reinstalling the Logos Imaging Software Application, please uninstall your old version prior to installing the updated software.

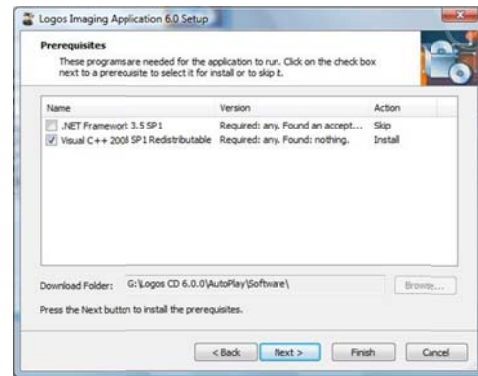
1. Download the Logos Installer to your target machine.
2. Open the downloaded zip file.
3. Run the LIA\_60 setup file.
4. There may be a considerable delay as the installer checks your system for the required prerequisites. If .NET Framework 3.5 SP1 or Microsoft Visual C++ 2008 Redistributable are missing, the installer will open the *Welcome to the Prerequisites Wizard*. If there are no missing components, the installer will move to step 13.



5. Read the License agreement, and select *I accept the terms in the license agreement* and click *Next*.



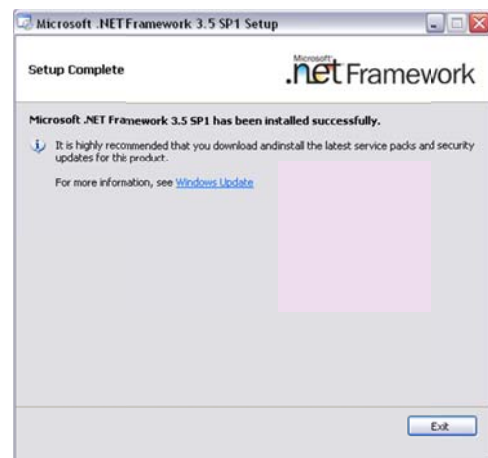
6. Ensure each missing component is checked and click *Next* to begin installation.



7. If .NET Framework 3.5 SP1 is required, read the License agreement, select *I have read and ACCEPT the terms of the License Agreement*, and click *Install*.

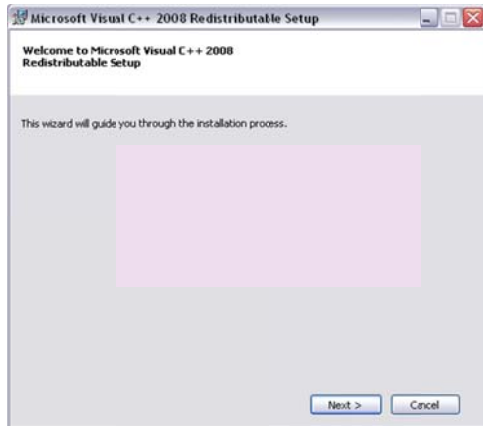


8. In the Microsoft .NET Framework 3.5 SP1 Setup window, click *Exit*.

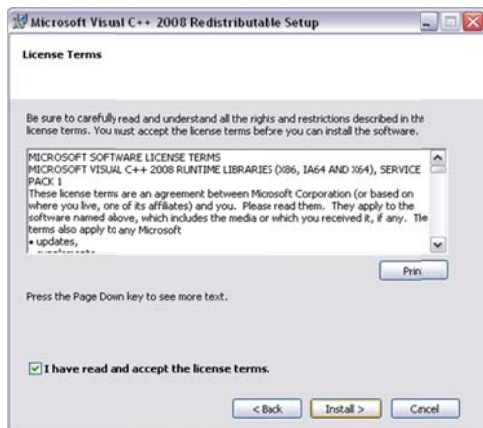


## Logos Imaging Application Software Installation Steps

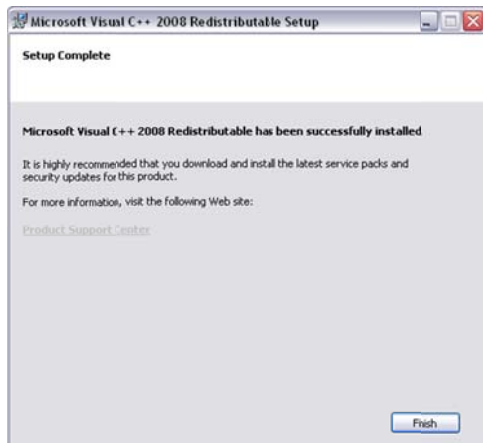
9. If Microsoft Visual C++ 2008 Redistributable is required, click *Next* in the Setup window.



10. Read the License agreement, select *I have read and accept the license terms*, and click *Install*.



11. In the Microsoft Visual C++ 2008 Redistributable Setup window, click *Finish*.



12. When the .NET Framework 3.5 SP1 and Microsoft Visual C++ 2008 Redistributable installations are complete, you may be prompted to restart your computer. Allow the computer to restart. If the Logos Installer does not begin automatically after the computer restarts, browse to the Logos CD root directory, launch LIA.exe, click *Install Software*, and click *Logos Software*.

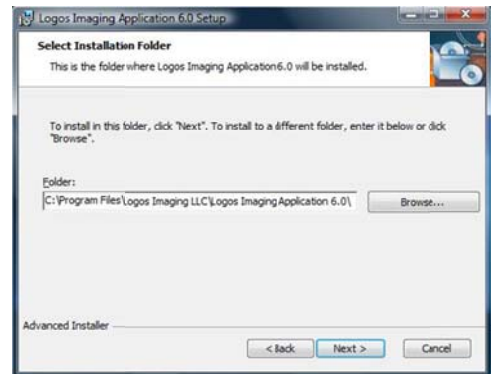
13. In the Welcome Logos Imaging Application 6.0 Setup window, click *Next*.



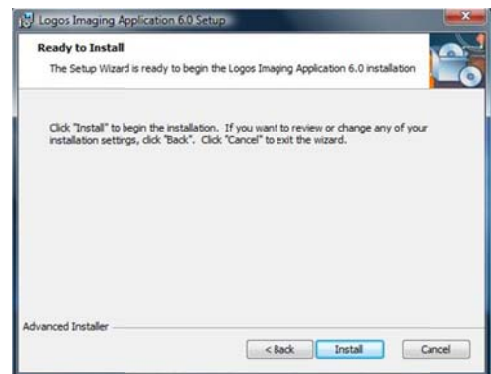
14. Read the License agreement, select *I accept the terms in the license agreement*, and click *Next*.



15. Click *Next* to keep the default destination location.

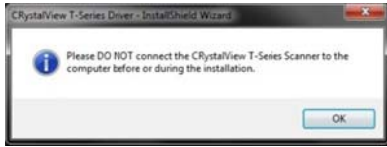


16. Click *Install* to begin installation.

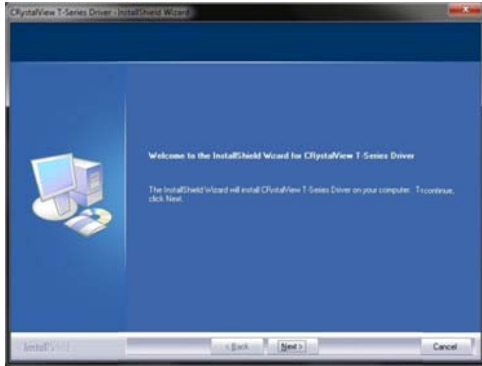


## Logos Imaging Application Software Installation Steps

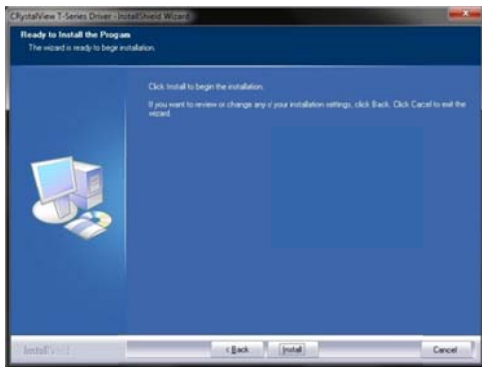
17. Click *OK* in the CRystalView T-Series Driver Installation Wizard window. If you have previously installed CRystalView drivers, the software will skip to step 26.



18. Click *Next* in the CRystalView T-Series Driver Installation Wizard window.



19. Click *Install* in the CRystalView T-Series Driver Installation Wizard window.



20. Click *Next* in the Device Driver Installation Wizard window.



21. Click *Finish* in the Device Driver Installation Wizard window.

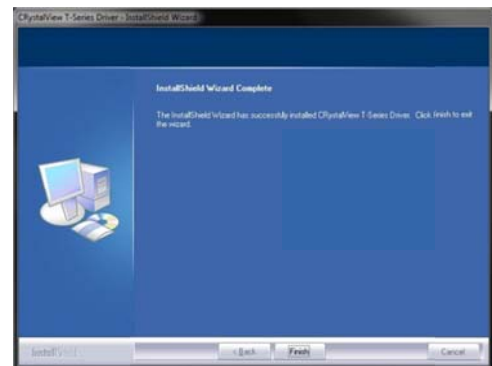


22. Repeat steps 20-21 for each Device Driver

23. Click *OK* in the RegSvr32 window.



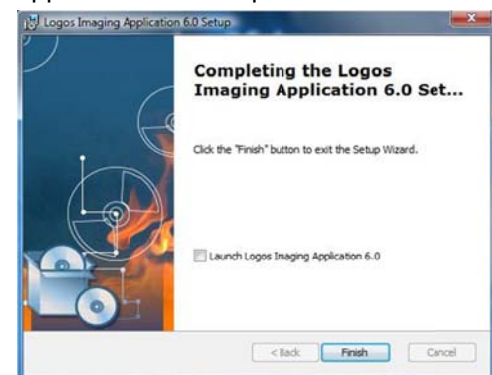
24. Click *Finish* in the CRystalView T-Series Driver Installation Wizard window.



25. Click *OK* in the CRystalView T-Series Driver Installation Wizard window. **Wait until after step 26 to connect the scanner.**



26. Click *Finish* in the Completing the Logos Imaging Application 6.0 Setup window.



## Logos Imaging Application Software Installation Steps

### Installing Logos Scanner Drivers

**Note: If you are installing the software on computer that has not been previously used with the Logos scanner, you must install the driver files separately on each USB port intended for use with the Logos Scanner. To install drivers on additional USB ports, turn the scanner power off, disconnect the USB cable, and complete steps 1 – 11 on each USB port.**

1. Attach a USB cable to the back of the Logos Scanner and then to an open USB port on your computer.
2. Plug the power cable into the Logos scanner and then into an 110V or 220V power supply.
3. Power On the scanner.
4. Steps 5 – 11 apply to XP only. In Vista and Windows 7, the drivers will install automatically.
5. In the T-Series Combo Firmware New Hardware Wizard window, select *No, not this time* when asked if Windows can connect to Windows Update to search for software. Click *Next*
6. Select *Install the software automatically (Recommended)*. Click *Next*
7. In the Completing the Found New Hardware Wizard window, click *Finish*.
8. In the T100 Scanner New Hardware Wizard window, select *No, not this time* when asked if Windows can connect to Windows Update to search for software. Click *Next*
9. Select *Install the software automatically*. Click *Next*.
10. Click *Continue Anyway* in the Windows Logo testing notification window.
11. In the Completing the Found New Hardware Wizard window, click *Finish*.