

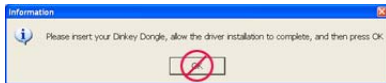
# Logos Imaging Application Software Installation Steps

## Installing

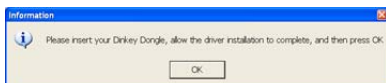
**IMPORTANT: Prior to Installing the Logos Imaging Application Version 5.0, please connect to Windows Update and install all priority updates for your computer.**

Note: Installing the Logos Imaging Application requires the hardware key (dongle) included with the software package. **DO NOT** connect the hardware key until prompted by the software.

1. Insert the Logos Imaging Application CD into your CD drive.
2. On the Logos Imaging Application menu, click *Install Software - Logos Software*.
3. There may be a considerable delay as the installer checks your system for the required prerequisites. If .Net Framework is required, follow the on-screen instructions to install v 3.5 SP 1. When the .Net installation is complete, allow the computer to restart. If the Logos Installer does not begin automatically after the computer restarts, browse to the Logos CD root directory and launch LIA.exe.
4. In the Welcome Logos Imaging Application 5.0 Setup window, click *Next*.
5. Read the License agreement, and select *I accept the terms in the license agreement* and click *Next*.
6. Click *Next* to keep the default destination location.
7. Click *Install* to begin installation.
8. **DO NOT click OK until you have completed steps 8-12 and the hardware key driver installation is complete.**



9. Attach the Dinkey Dongle hardware key when prompted. (If you have previously installed the Logos software using the hardware key, a green light on the end of the hardware key will indicate that the drivers are already installed, and you can skip to step 12.)
10. In the Found New Hardware Wizard window, select *No, not this time* when asked if Windows can connect to Windows Update to search for software. Click *Next*.
11. Select *Install the software automatically*. Click *Next*.
12. In the Completing the Found New Hardware Wizard window, click *Finish*.
13. Click *OK* in the Please insert Dinkey Dongle information window.
14. The software will display a message indicating a successful installation and the options installed. Click *OK*.
15. Click *Finish* in the Completing the Logos Imaging Application 5.0 Setup window.



Note: If you are installing the software on computer that has not been previously used with the Logos scanner, you must install the driver files separately on each USB port intended for use with the Logos Scanner. To install drivers on additional USB ports, turn the scanner power off, disconnect the USB cable, and complete steps 1 – 11 on each USB port.

1. Attach a USB cable to the back of the Logos Scanner and then to an open USB port on your computer.
2. Plug the power cable into the Logos scanner and then into an 110V or 220V power supply.
3. Power up the Logos Scanner.
4. In the New Hardware Wizard window, select *No, not this time* when asked if Windows can connect to Windows Update to search for software. Click *Next*
5. Select *Install the software automatically (Recommended)*. Click *Next*
6. Click *Continue Anyway* in the Windows Logo testing notification window.
7. In the Completing the Found New Hardware Wizard window, click *Finish*.
8. In the New Hardware Wizard window, select *No, not this time* when asked if Windows can connect to Windows Update to search for software. Click *Next*
9. Select *Install the software automatically*. Click *Next*.
10. Click *Continue Anyway* in the Windows Logo testing notification window.
11. In the Completing the Found New Hardware Wizard window, click *Finish*.

## Installing Logos Scanner Drivers