

Logos Imaging Application Software Installation Steps

IMPORTANT: Prior to Installing the Logos Imaging Application Version 5.2, please connect to Windows Update and install all priority updates for your computer.

Note: Installing the Logos Imaging Application requires the hardware key (dongle) included with the software package. **DO NOT** connect the hardware key until prompted by the software.

Note: If you are reinstalling the Logos Imaging Software Application, please uninstall your old version prior to installing the updated software.

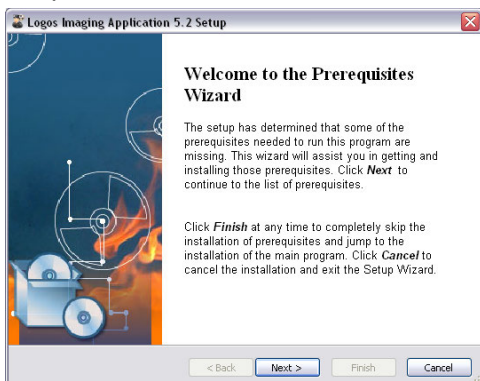
1. Insert the Logos Imaging Application CD into your CD drive.
2. On the Logos Imaging Application menu, click *Install Software*.



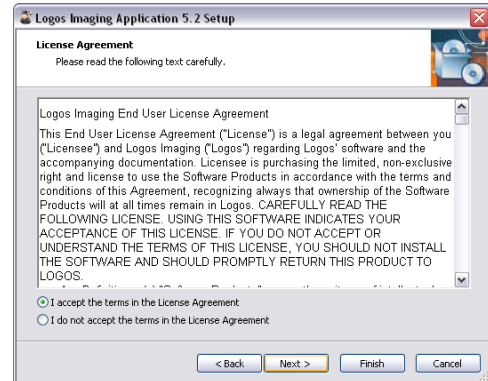
3. On the Install Software menu, click *Logos Software*.



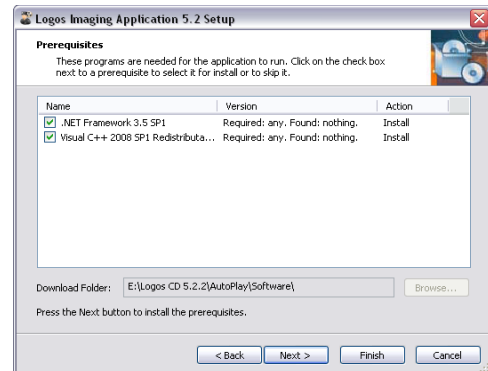
4. There may be a considerable delay as the installer checks your system for the required prerequisites. If .NET Framework 3.5 SP1 or Microsoft Visual C++ 2008 Redistributable are missing, the installer will open the *Welcome to the Prerequisites Wizard*. If there are no missing components, the installer will move to step 13.



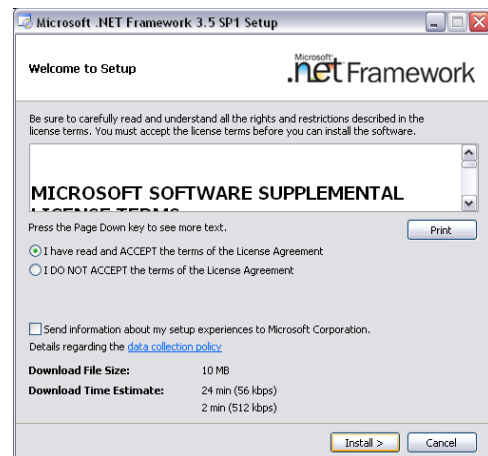
5. Read the License agreement, and select *I accept the terms in the license agreement* and click *Next*.



6. Ensure each missing component is checked and click *Next* to begin installation.

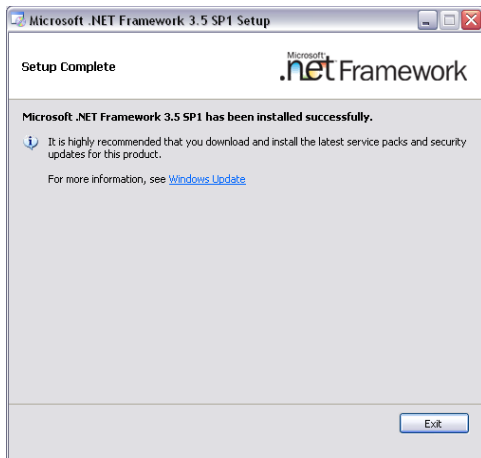


7. If .NET Framework 3.5 SP1 is required, read the License agreement, select *I have read and ACCEPT the terms of the License Agreement*, and click *Install*.

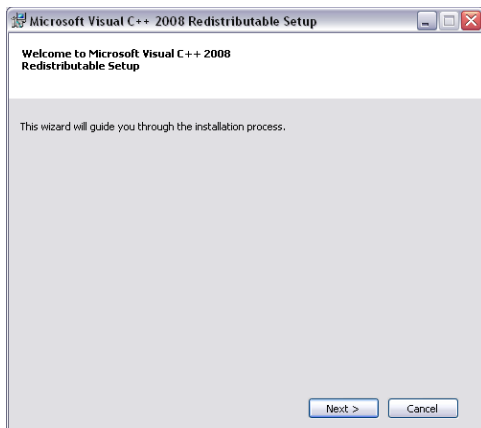


Logos Imaging Application Software Installation Steps

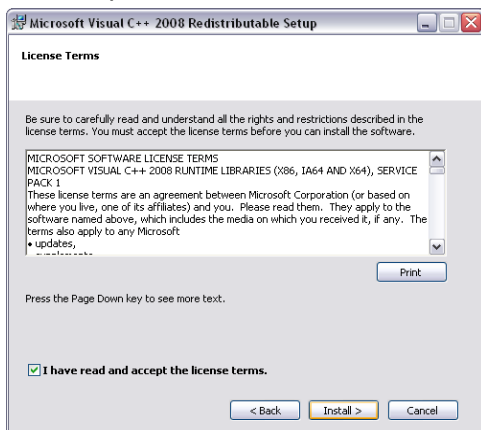
8. In the Microsoft .NET Framework 3.5 SP1 Setup window, click *Exit*.



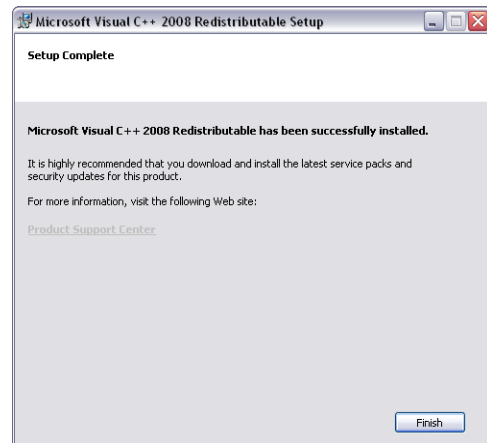
9. If Microsoft Visual C++ 2008 Redistributable is required, click *Next* in the Setup window.



10. Read the License agreement, select *I have read and accept the license terms*, and click *Install*.



11. In the Microsoft Visual C++ 2008 Redistributable Setup window, click *Finish*.

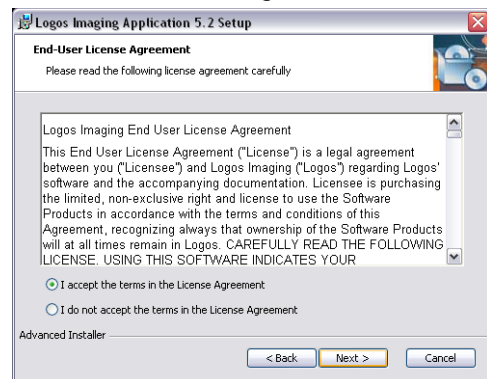


12. When the .NET Framework 3.5 SP1 and Microsoft Visual C++ 2008 Redistributable installations are complete, you may be prompted to restart your computer. Allow the computer to restart. If the Logos Installer does not begin automatically after the computer restarts, browse to the Logos CD root directory, launch LIA.exe, click *Install Software*, and click *Logos Software*.

13. In the Welcome Logos Imaging Application 5.2 Setup window, click *Next*.

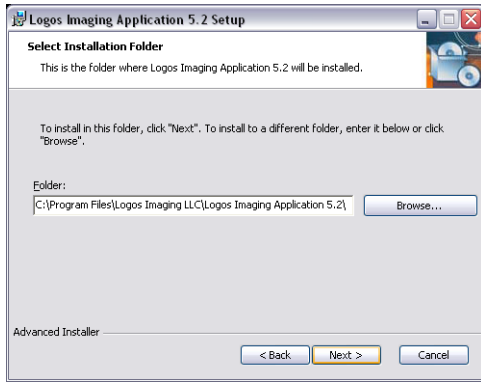


14. Read the License agreement, select *I accept the terms in the license agreement*, and click *Next*.

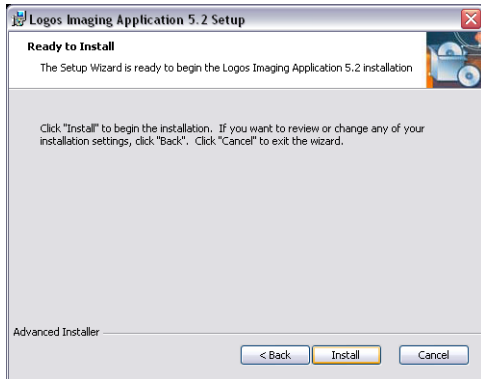


Logos Imaging Application Software Installation Steps

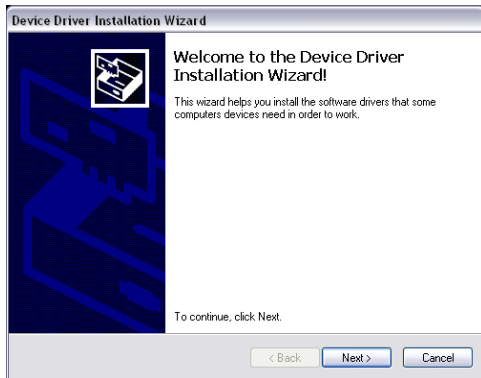
15. Click *Next* to keep the default destination location.



16. Click *Install* to begin installation.



17. Click *Next* in the Device Driver Installation Wizard window.

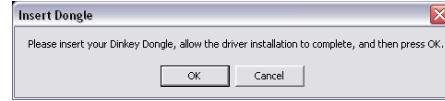


18. Click *Finish* in the Device Driver Installation Wizard window.



19. **DO NOT** click **OK** until you have completed steps 20-23 and the hardware key driver installation is complete.

20. Attach the Dinkey Dongle hardware key when prompted. (If you have previously installed the Logos software using the hardware key, a green light on the end of the hardware key will indicate that the drivers are already installed, and you can skip to step 12.)



21. In the Found New Hardware Wizard window, select *No, not this time* when asked if Windows can connect to Windows Update to search for software. Click *Next*.



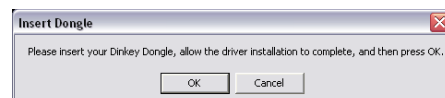
22. Select *Install the software automatically*. Click *Next*.



23. In the Completing the Found New Hardware Wizard window, click *Finish*.

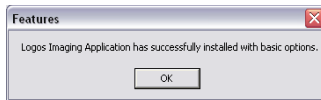


24. Click *OK* in the Please insert Dinkey Dongle information window.

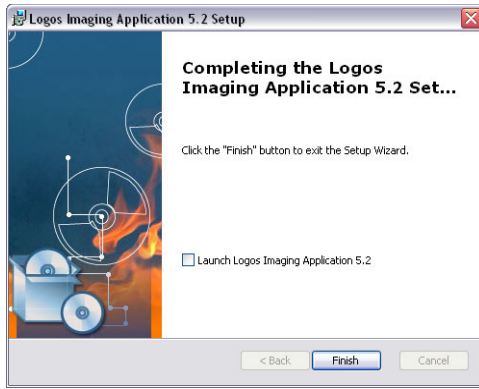


Logos Imaging Application Software Installation Steps

25. The software will display a message indicating a successful installation and the options installed. Click *OK*.



26. Click *Finish* in the Completing the Logos Imaging Application 5.2 Setup window.



Installing Logos Scanner Drivers

Note: If you are installing the software on computer that has not been previously used with the Logos scanner, you must install the driver files separately on each USB port intended for use with the Logos Scanner. To install drivers on additional USB ports, turn the scanner power off, disconnect the USB cable, and complete steps 1 – 11 on each USB port.

1. Attach a USB cable to the back of the Logos Scanner and then to an open USB port on your computer.
2. Plug the power cable into the Logos scanner and then into an 110V or 220V power supply.
3. Power On the scanner.
4. Steps 5 – 11 apply to XP only. In Vista and Windows 7, the drivers will install automatically.
5. In the T-Series Combo Firmware New Hardware Wizard window, select *No, not this time* when asked if Windows can connect to Windows Update to search for software. Click *Next*
6. Select *Install the software automatically (Recommended)*. Click *Next*
7. In the Completing the Found New Hardware Wizard window, click *Finish*.
8. In the T100 Scanner New Hardware Wizard window, select *No, not this time* when asked if Windows can connect to Windows Update to search for software. Click *Next*
9. Select *Install the software automatically*. Click *Next*.
10. Click *Continue Anyway* in the Windows Logo testing notification window.
11. In the Completing the Found New Hardware Wizard window, click *Finish*.